

WELCOME TO

123 HAENER DRIVE

\$998,000

ROD STIRLING
WORK 867.669.2115
CELL 867.446.1046



ROOM SIZES

Living Room 20.10 X 14.6	Dining Room 7.7 X 11	Kitchen 13.3 X 11	Family Room 20.10 X 26.2		BATHS 1-1pc, 1-2pc, 1-4pc, 1-3pc Ensuite, 1-4pc Ensuite
Primary Bedroom 18.7 X 15.7	Bedroom 9.5 X 9.1	Bedroom 14.5 X 10.1	Bedroom 14.5 X 10		Storage Basement Partial
Laundry Room 5.8 X 7.2				Make: Model: Serial #:	Foyer / Entry Deck Front, Side & Upper Decks Over 500 Sq. Ft.

HEAT

INSULATION

BUILDING

LOT

Type OIL HW PELLETS	Ceiling: R 52	Sq. Ft. 2672	Lot Size 5537
Annual Cost \$3,300.00 Oil	Walls: R 32	Age 2012	Garage Double Attached & Heated
Litres Over 4 Pallets of pellets \$1680	Floor: R	Lot 4 Block 311 Plan 3989 Unit	Parking Double, 4 tandem
Last 12 Mo. 2 tanks plus pellets	Skirting: R		

SPECIAL FEATURES /FURNISHINGS:

With features galore inside and out this custom designed one owner home offers over 2600 sq ft of living space on 3 levels with 4 BR/4baths and a huge double garage that will fit any vehicle with room for that 2nd vehicle and a workshop area as well. Long life hardboard siding with metal accenting. Decks on both sides, front and back catch all day sun with an upper level coffee deck of the primary bedroom that receives morning sun. All decks are pressure treated and have been replaced in the past few years and have been freshly stained. Interlocking brick driveway. 22x30 garage with 10' ceilings, painted slab, in-floor heat and a storage cubby under the stairwell. Stairs up the main level living, kitchen and dining area with entry door to the house from the exterior stairs with a built-in sitting bench and an entry door to the side deck. All exterior doors have been recently replaced. The custom maple kitchen features concrete counter tops, a concrete island with an additional sink, a breakfast bar with pendant lights, Herring bone style tiled kitchen backsplash, BI vac throughout with an outlet in the garage and a kitchen toe/kick plate. Main level feature ceiling with pot lighting. All lighting throughout is LED. There is 2 pc bath off the living room with a vessel sink and a 3 pc bath also on this level set in tile with cut-outs for bathroom products. There is an additional storage platform built around the rock with bonus storage also on this level off the mechanical area. The living room also features a quality pellet stove that keeps the heating costs down in the super well-built energy efficient house. All flooring throughout, including the baths and backslashes are cherry wood oak hardwood or porcelain tile. The entire house has been repainted in the past two years. The upper level of the home features 4 BR's, 2 with ensuite baths, another full bath and a huge family room with room for an office and a study area with a built-in maple entertainment centre and custom built in wardrobes in the bedrooms. The primary bedroom is not only very spacious with the king sized bed looking small in the room, and is spacious enough to feature a sitting area as well. The beautiful ensuite bath has a jetted tub, a separate corner shower a tiled vanity with a vessel sink that walks through to a huge walk-in closet with a custom built closet organizer. The second and third bedrooms are also very spacious with the one BR featuring a 3 pc adjoin bath, perfect for a room rental/revenue helper. Upper level separate laundry room with laundry sink. Other features include wainscoting on walls throughout in-floor heat throughout. Concrete pinned to bedrock foundation. Regal metal railing on spacious front deck that receives evening with duradeck deck-top. Play finish ceiling in the upper level. Custom shaker style solid maple interior doors throughout.

Price Includes: Fridge, stove (propane) , dishwasher, washer, dryer,(Propane) , freezer, bar leftover/ fridge, window coverings, BI Vac & attachments, shed, garage door opener and controls.

Not intended to solicit properties currently listed for sale or buyers under contract. The trademarks REALTOR®, REALTOR® logo are controlled by The Canadian Real Estate Association (CREA) and identify real estate professionals who are members of CREA. Used under license. The trademark MLS®, Multiple Listing Service® and the associated logos are owned by The Canadian Real Estate Association (CREA) and identify the quality of services provided by real estate professionals who are members of CREA. Used under license. Above information is from sources believed reliable but should not be relied upon without verification. NORTHERN BESTSELLERS assumes no responsibility for its accuracy.

FOUNDATION

Concrete pinned to bedrock

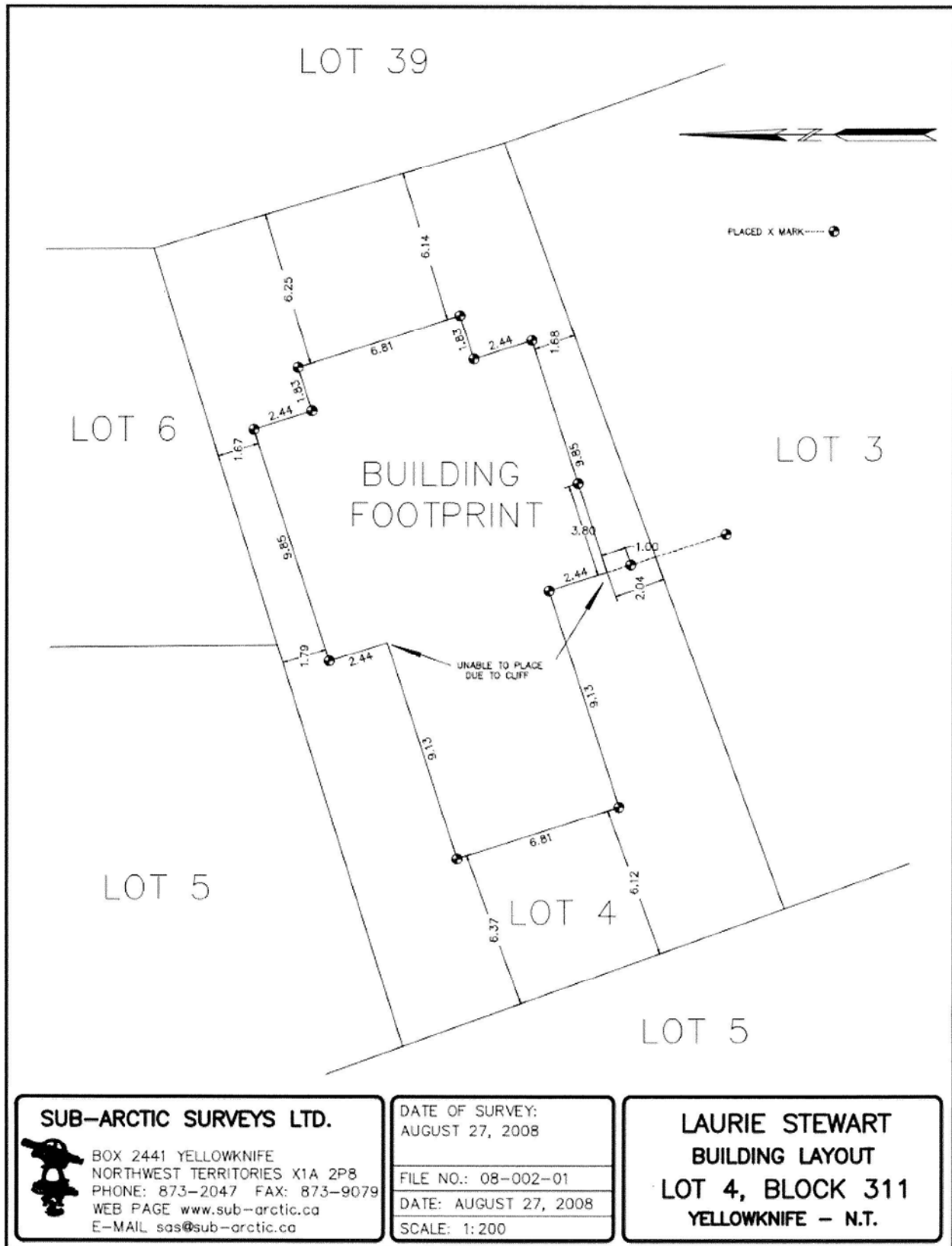
PROPERTY TAXES

Amount/yr \$7974.55 2025

Tenure Fee Simple

Fees

Area NIVEN LAKE





123 Haener Dr, Yellowknife, NT

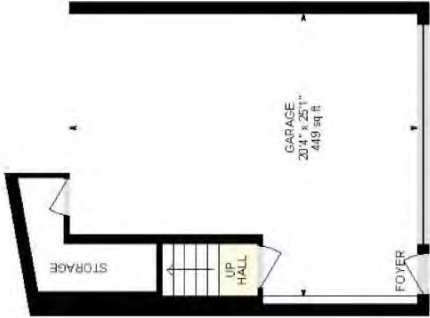
Main Building: Total Exterior Area Above Grade 2671.94 sq ft



1st Floor
Exterior Area 798.11 sq ft



2nd Floor
Exterior Area 1873.83 sq ft



Ground Floor (Below Grade)
Exterior Area 17.13 sq ft



PREPARED: 2025/08/02

White regions are excluded from total floor area in iGUIDE floor plans. All room dimensions and floor areas must be considered approximate and are subject to independent verification.

